



Work
Together
Happy
Together

Upon publishing this year's Annual Report

In 2007, the Work Together Foundation (WT) began to publish annual reports on its business and accomplishments with a goal of improving our stakeholders' understanding of the Foundation and what it does. This Annual Report 2015, the ninth in the series, describes the various efforts WT has been making to promote sustainability at both the individual and societal levels, as well as its main achievements. The Report also lists partners in and outside Korea who support the Foundation's programs and activities in agreement with the values and causes the Foundation pursues.

Report period and scope

This Annual Report covers the activities and accomplishments of WT within fiscal year 2015, from January 1 to December 31, 2015. Some sections, however, also reflect the Foundation's plans for 2016.

Report verification

All information contained in this Report is based on a series of indicators and indices identified and verified by the administrator and managing executives of WT.

For any inquiries or comments, please e-mail us at:

hamkke@hamkke.org

Work
Together
Happy
Together

○ Contents

06	Greetings from the Chairperson
07	About the Work Together Foundation
08	Management & Business Performance

Establishing an Employment Base

11	Light A Lamp
11	Change Maker of Our Village
12	Mania Giving Circle
12	Support Campaign for Independence of Unwed Mothers

Job Creation & Enhancement

Youth

14	Support Project for NEET Youth
----	--------------------------------

Senior Citizens

15	Senior Citizen Business Funds
----	-------------------------------

Others

16	Support for the Disadvantaged through Care Services
16	Seeds of Hope for Social Enterprises
17	'Go-With' Multicultural Social Business Support Project
17	'Social Economy Academy for the Disabled' for Job Support

Vitalization of the Social Economy

Social Enterprises / Social Ventures

- 19 Promotion of Creative Social Enterprises Project
- 19 Social Venture Growth Support Project
- 20 Hanwha Eco-friendly Social Enterprise Support Project
- 20 Social Enterprise ICT Support Project

Cooperatives

- 21 Cooperative Model Discovery & Growth Support Project

Social Finance

- 22 Solidarity Benevolent Fund of Social Enterprises
- 22 Community Development Fund

International Cooperation

- 24 Smile Together Partnership
- 27 Global Social Enterprises Accelerating Project
- 27 International Exchange Activities

Policy Research

- 29 Research Support Project
- 29 Policy Debate Forum

- 30 Foundation History
- 32 WT Organization

Greetings from the Chairperson

The year 2015 was a transitional one for WT as we make plans for the future. A new mission and vision were formulated and WT was reorganized for the betterment of society.

With "Establishing a happy society while alleviating social polarization through quality jobs" as our new mission, WT is working towards creating a society where no one is left behind, and harmony is promoted as we resolve employment polarization through creation of decent jobs that respect the inherent dignity and value of people, and help people maintain the ability to support themselves and their families.

WT is engaged in support programs for children, youths and the unemployed. Further, WT has worked with local NGOs, enterprises, and local governments to establish employment-friendly government policies, improve employment and welfare services for the disadvantaged. In addition, stable jobs are created for middle-aged female heads of households, support is offered to unemployed young people (both directly and through establishment of a supportive infrastructure), and new value models are created that take advantage of the experience and skills of the senior members of society. Our foundation also stands for creation of steady employment for members of multicultural families, the disabled, those in the lower income brackets, social service practitioners, micro enterprises, and North Korean defectors. In addition, towards enhancing employment and a better standard of living, WT is pushing a variety of projects to build and grow a better environment for the social economy.

WT works to support social enterprises and cooperatives, and focuses on strengthening international cooperation towards making the social economy more sustainable. We also conduct research on employment and changes to the social economy as the basis for policy proposals and strategies to solve problems. WT works to connect the efforts of society and its people and create practical alternatives towards greater societal sustainability.

The Work Together Foundation is dedicated to making the world a happier place.

Chairman 

About the Work Together Foundation

Since 2003, WT has been a foundation for the public interest, dedicated to alleviating social polarization and establishing a healthier society through creation of quality jobs, as evidenced by our original mission statement: 'Overcoming Unemployment'. This attention to job creation has included outreach to various segments of society: the youth, women, the middle-aged, and especially towards supporting sustainability in social enterprises which represent a new model of structure for creating decent jobs. In addition, we suggest potential ways to improve the situations of unemployment and poverty through campaigns, research, and publications.

Slogan

"A society that works together, opens up a future together"

Mission

"Establishing a happy society while alleviating social polarization through quality jobs."

Jobs that respect the inherent dignity and value of people, bring them out of isolation and into harmony with society, and resolve polarization.

Vision 2025

"An organization, unrivaled in reliability, and playing a leading role in resolving unemployment through independent action by civil society"

WT aims to be the organization most trusted by government, the civil and private sectors, and society as it plays a leading role in resolving unemployment through autonomous activities in civil society.

Core Values

Creativity

Professionalism

Field Work
Centered

2015 Management Performance

Total revenue

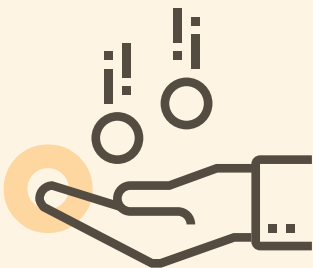
14,706,167,496 (KRW)

Fund-raising and project revenue	KRW 4,967,523,216
Interest and profits	KRW 1,233,297,178
Benevolent funds	KRW 1,677,598,335
Balance carried over from previous account	KRW 6,827,748,767



Total spending

8,233,826,989 (KRW)



Expenditures

Based on executed settled accounts as of December 31, 2015

Budgeted Items	Cost (KRW)	Percentage (%)
Establishing an Employment Base	1,517,160,185	18.4
Job Creation & Enhancement	644,826,232	7.9
Vitalization of the Social Economy	3,507,241,627	42.6
International Cooperation	756,021,459	9.2
Policy Research	149,398,540	1.8
Fund Raising Efforts / Marketing	133,215,285	1.6
Operational Expenses	1,525,963,661	18.5
Total	8,233,826,989	100

2015 Business Performance

Total business expenditure

6,707,863,328



Supported Organizations

651



Business Area	Budget (KRW)	Proportion (%)
Establishing an Employment Base	1,517,160	22.6
Job Creation & Enhancement	644,826	9.6
Vitalization of the Social Economy	3,507,242	52.3
International Cooperation	756,021	11.3
Policy Research	149,399	2.2
Fund Raising Efforts / Marketing	133,215	2.0
Total	6,707,863	100

Business Area	Supported Organizations	Proportion (%)
Establishing an Employment Base	170	26.1
Job Creation & Enhancement	48	7.4
Vitalization of the Social Economy	247	37.9
International Cooperation	156	24.0
Policy Research	30	4.6
Total	651	100

Support for Job Creation (or Sustaining)

1,489



Beneficiaries with training or education

12,300



Business Area	The Employed (persons)	Proportion (%)
Establishing an Employment Base	99	6.7
Job Creation & Enhancement	522	35.0
Vitalization of the Social Economy	171	11.5
International Cooperation	697	46.8
Total	1,489	100

Business Area	Beneficiaries (persons)	Proportion (%)
Establishing an Employment Base	775	6.3
Job Creation & Enhancement	260	2.1
Vitalization of the Social Economy	884	7.2
International Cooperation	10,214	83.0
Policy Research	167	1.4
Total	12,300	100



Establishing an Employment Base

WT is engaged in relief activities in support of children, adolescents, and the unemployed. We also push for establishment of employment-friendly policies and improving employment conditions of the disadvantaged together with local NGOs, enterprises, and governments.

○ Light A Lamp

The Light A Lamp is a project which helps children and adolescents in low income families realize their dreams.

In 2015, the project assisted 100 high school students selected by their principals to obtain certificates or training related to their chosen careers or increasing employment opportunities in general. It supported 408 youths with career experience activities, specialty & aptitude guidance, and activities increasing interests for their own communities.



○ Change Maker of Our Village

"The Change Maker of Our Village" is a joint project between the Work Together Foundation and Boeing Korea to vitalize communities by encouraging residents to revive their local community values and culture.

In 2015, four projects were selected that allowed community residents, including vulnerable children, to interact with local artists and activists through cultural art programs and to participate in dance, music, performances and movies and to experience the value of the community through these activities.



○ Mania Giving Circle

Mania Giving Circle, made up mainly of members of the fan club for the musician, Seo Tai-ji, made an agreement with WT in November 2009 to carry out a project known as "Jip Baag-e-seo Yoo Yoo Ja Juk (Hanging Loose Outside)" to help "Zero Gravity Youth" for 5 years with formation of social relationships.

The project assisted more than 60 "zero gravity youth" with building relationships with society and, once the project ended, WT published a memoir of the "Jip Baag-e-seo Yoo Yoo Ja Juk" project titled ←Yoo-Ja Chat-Jip→ and distributed it to youth support organizations around the country, such as 'Support Center for Youth Outside of School', community child centers and support centers for youth independence to glean ideas for their own projects.

* Zero gravity youth refers to youth who are not active in their communities

** Yoo-ja is a citrus fruit people make as tea in Korea.

○ Support Campaign for Independence of Unwed Mothers, "I'm a Mother"

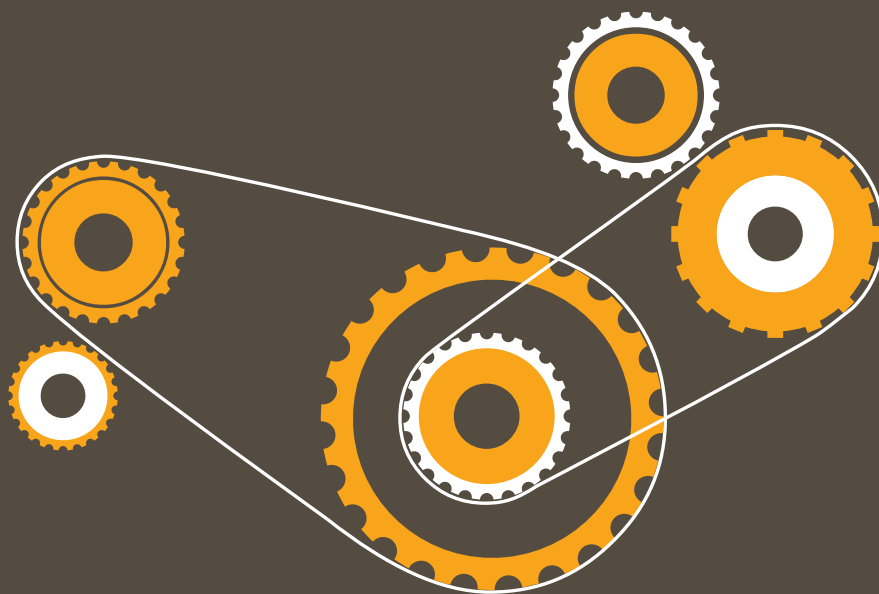
'I'm a Mother' is the support campaign for independence of unwed mothers with Korean Unwed Mothers Support Network, Memory Plant, Merry Campaign, and the Community Chest of Korea (Seoul branch) to decrease the blind spots in support for unwed mothers and the reality of discrimination.

Online and offline campaigns to improve social relations for such mothers include production of animation, art books and plays, encouraging people to sign a social pact to prevent discrimination against the families of unwed parents, and development of an activity to experience the discrimination that an unwed mother faces.



Job Creation & Enhancement

In 2015, WT engaged in diverse projects for the disadvantaged, such as creation of stable jobs for middle-aged female heads of households and support for unemployed young people (both directly and through establishment of a supportive infrastructure to reduce unemployment). It also worked to create a new model which values the experiences and skills of seniors to improve their employment situation, and create decent jobs for migrants who are members of multicultural families, the disabled, those in lower income brackets, social service practitioners, micro enterprises, and North Korean defectors.



Youth

○ Support Project for NEET Youth

Considering the lack of official statistics or clear countermeasures for NEET (Not in Education, Employment, or Training) youth while the level of awareness is growing, WT released a Korean translation of a book on NEET youth in Japan. WT is dedicated to promoting social bonds of sympathy, understanding and support for NEET youth, and cooperates to improve the support capabilities with domestic and oversea organizations.

The book was published in Korea by WT in 2015, and is titled 'Moo-up-Sa-Hwe (The No Work Society) – The Future of Youth Unable to Find Work' co-authored by Kei Kudo and Ryosuke Nishida. In addition, WT participated in Nariyuki Festival, hosted by K2, an NGO engaged in youth support, from August 21 to 23 and exchanged ideas on support for NEET youth with NEET organizations based in Korea and in Japan.

WT will continue identifying the major players supporting NEET youth, advancing networks for their development, and establishing a variety of support projects.



Senior Citizens

Senior Citizen Business Funds

WT provides backing for services provided by seniors and development of products offered by small enterprises with potential. Together with Yuhan-Kimberly Ltd., WT has created a 'Senior Citizen Business Funds' to create jobs for active seniors.

In 2015, WT also ran the 'Small Enterprise Activation Project' which provides support to promising enterprises in products for seniors, and the 'Small Enterprise Business Model Enhancement Project' which offers consultancy services to assist startups with products and service development for seniors. It also operates the 'Items for Seniors Discovery Team Project' to identify the needs of senior citizens or create new employment models for them.

Between 2012 and 2015, WT highlighted and supported 30 social enterprises or small businesses in creating 184 jobs and 89 products for seniors.



Others (Migrants who are members of multicultural families, the disabled, those in low income brackets, social service practitioners, etc.)

○ Support for the Disadvantaged through Care Services

Together with the Korea Housing Finance Corporation, WT planned and operates a “Support for the Disadvantaged through Care Services Project” to create jobs and provide secure employment for the disadvantaged. By subsidizing allowances for long service, performance-related pay, and educational expenses to care service social enterprises for their employees, WT guarantees secure employment of caregivers, which results in quality care services. In 2015, WT contributed to job creation or job security for about 300 people.



○ Seeds of Hope for Social Enterprises

WT ran the ‘Seeds of Hope for Social Enterprises’ with the Export-Import Bank of Korea to promote stability in employment and daily life for newly-recognized vulnerable members of society, including female migrant workers.

Through this project, WT selected 11 enterprises and subsidized the costs for equipment and facilities or expenses for business operation, which is helpful to establishing enterprise independence.



○ 'Go-With' Multicultural Social Business Support Project

WT conducted a 'Go-With Multicultural Social Business Support Project' with Hyosung to facilitate multicultural social enterprises achieving their sustainability as enterprises.

It selected and offered funding and consultancy services to three organizations, which strengthened the enterprises' sustainability and provides secured employment to migrant female workers who married Korean.



○ 'Social Economy Academy for the Disabled' for Job Support

WT gave its support to education programs and workshops on job support for the disabled at the 'Social Economy Academy for the Disabled' which is operated by "Research Institute of the Differently Abled person Rights in Korea" to make it easier for them to learn and make use of cooperatives and the social economy and adapt their learning to promote employment and improve conditions for the disabled.





Vitalization of the Social Economy

WT supports the creation of a social economy-friendly environment with social economy organizations such as social enterprises and cooperatives recognized as sustainable alternative employment models.

Social Enterprises / Social Ventures

○ Promotion of the Creative Social Enterprises Project

WT runs Korea's first social venture incubation center by the civil sector where successful models for social enterprises can be developed through customized assistance given to promising social ventures. Since 2011, the 'Promotion of creative social enterprises project' has been conducted by WT and the Korea Social Enterprise Promotion Agency (KoSEA) as a way to develop social entrepreneurs with innovative ideas and enthusiasm. In 2015, a total of 30 startup teams spent a year defining social missions together, verifying business ideas, developing business models, and internalizing and practicing ways to create social value,

From 2011 to 2014, space and full-time mentoring were provided to 22 selected teams through the 'Promotion of creative social enterprises project' while they contributed to establishing a social venture-friendly environment. Two social enterprises, 24 preliminary local social enterprises, and 5 shared enterprises in Seoul were selected between 2011 and 2014.



○ Social Venture Growth Support Project

As a joint project between WT and the Export-Import Bank of Korea, the Social Venture Growth Support Project focuses its support on enterprises which have already been backed through the 'Promotion of Creative Social Enterprises Project' and have high potential of success and innovation to make them a successful business model. Ten enterprises have been selected and received funding once their goals for 2016 were set, and they had undergone a competence improvement program comprised of three stages according to their phase of business development.



○ Hanwha Eco-friendly Social Enterprise Support Project

Together with Hanwha, WT works to promote the coexistence of mankind and the natural environment, and discover and support promising eco-friendly social enterprises.

In the 3 years between 2012 and 2015, 48 enterprises received support and diverse business models were discovered to make social enterprises more eco-friendly. Integrated and customized support measures have helped increase the total sales of supported enterprises by 15.2% and employment by 9%, and the sustainability of these enterprises.

In addition, a total of 115 persons completed the KAIST Social Entrepreneur Management Expert program courses, which focus on vitalizing the social economy eco-system as well as providing support for businesses that in turn support the growth of social enterprises.



○ Social Enterprise ICT Support Project

WT conducted a 'Preliminary Social Enterprises ICT Support Project' with Samsung SDS to improve the sustainability of preliminary social enterprises and help them keep up with the rapid changes in the digital and online media environment.

A total of 19 enterprises (10 receiving holistic support, 9 receiving limited support) are selected and supported through customized solutions according to their current situation. The end result is improvements in their efficiency and working environments, as well as their abilities to utilize IT and other media.

Cooperatives

○ Cooperative Model Discovery & Growth Support Project

The Cooperative Model Discovery & Growth Project has been run with the collaboration of KEPCO (Korean Electric Power Corporation) since 2012, and is designed to discover and support business models for cooperatives that are suited to the national economic and social environment.

Funding support, consultations, education, and networking opportunities are provided for small cooperatives at the initial stages towards self-sufficiency. Through this project, 31 enterprises (7 only in 2015) were supported, and 104 persons provided with security in decent jobs from 2012.



Social Finance

○ Solidarity Benevolent Fund of Social Enterprises

The Solidarity Benevolent Fund of Social Enterprises has been established together with the Korea Central Council of Social Enterprise and the Export-Import Bank of Korea to build strong safety net for social enterprises and their employees with an attitude of self-sufficiency and cooperation between social enterprises and their employees.

WT facilitated social enterprises saving their own funds, and from those funds, loans could be provided (up to five times the amount saved by an individual member enterprise) to member social enterprises having difficulty getting financing. Beginning with the first installment of savings from members in September 2014, the first loan was given in April 2015. By October, the fund was regarded as having a solid foundation as there were more than 100 enterprises signed on. Operations of the Solidarity Benevolent Fund of Social Enterprises (management, operation, and assets valued at KRW 670 million, including donations) were transferred to the Korea Central Council of Social Enterprise on November 30, 2015.

○ Community Development Fund

Social enterprises often face unexpected crises or financial difficulties during their growth process. WT has supported enterprises in such situations through the Community Development Fund since 2008.

This is a loan service project for social enterprises and has been in operation since 2008 with funding from the Ministry of Employment & Labor, Smile Micro Bank, and the Bank of Korea to allow social enterprises to handle unexpected crises and financial difficulties better and keep growing.

A total of KRW 11.8 billion has been given in loans, with a rate of repayment of 95.5%. Now WT manages KRW 200 million under this project.



International Cooperation

WT works to deepen international exchanges and cooperation towards a more sustainable society, introducing cases of success from overseas as well as domestic social enterprise models to international society. Since 2011, WT has been involved in international cooperation development programs to fundamentally resolve unemployment and poverty in developing countries through social enterprises. Such international exchange activities and programs contribute to deepening global collaboration to making society better.



◉ Smile Together Partnership

The Smile Together Partnership (STP), operated by WT, facilitates children living in poverty overseas to escape that poverty and live as healthy members of society. STP provides quality jobs to parents and educational opportunities to children through support for locally-led-and-based social enterprises. Funds (for up to 3 years) and networks for human and material resources are provided to selected partners. In 2015, WT supported 7 organizations, created 692 jobs, and provided safety nets for 3,639 family members supported with job creation. For 2016, Happy Farm, Igting Organic Farm, Wahahatripti, and Good Hands Nepal were selected as new partners in the Smile Together Partnership. Since launching STP in 2011, WT has backed up 16 organizations in 10 countries, employing 1,313 people, who in turn were able to support 5,500 dependents.

* WT selects new partners every year and maintains business partnerships and provides resources even after funding support has ended.



What Is the Smile Together Partnership?



The Smile Together Partnership is a program launched by the Work Together Foundation of Korea in 2011 with the intent of supporting the establishment and operation of social enterprises in developing countries, thereby creating locally-based sustainable jobs for low-income families, alleviating child poverty, and improving quality of life.

The program assists the heads of low-income households in finding employment and engaging in productive activities towards independently raising and educating their children.



The program also provides character-building education and occupational training for under-educated youth towards their becoming a capable part of the workforce and bringing pride to their local communities.

Through the Smile Together Partnership, the Work Together Foundation seeks to increase quality jobs, support effective parenting, childcare and education for children in poverty, and promote and protect human dignity and social inclusion in developing countries.

Key questions when selecting enterprises/organizations to benefit

- Is the enterprise/organization embedded in the local community and does it work with local people?
- Does the enterprise/organization support the development of leadership in local youth to lead enterprise/organization projects in the future?
- Does the enterprise/organization run on a sustainable business model that does no harm to local culture, society, or the environment?
- Does the enterprise/organization contribute to alleviating the fundamental problems behind child poverty?

CAMP Sewing Center by CAMP Asia Inc.	CAMP Sewing Center strives to alleviate poverty among the urban poor and single-parent families in Towerville, Bulacan, who were relocated from Metro Manila from Metro Manila, and also provides meals for undernourished children and childcare. Location: Towerville, the Philippines
Craft Peace Café by Banteay Prieb	Run directly by JSC Banteay Prieb, the Craft Peace Café in Cambodia supports producers with disabilities and their families towards economic self-sufficiency. The Café also provides wheelchairs and housing assistance for disabled children and youth. Location: Phnom Penh, Cambodia
Café ZumSun by Phoudindaeng Youth Center	Café ZumSun is part of the Phoudindaeng Youth Center, which supports youth leadership in Laos. The Center works to improve the living standards and education for children and youth living in poor rural areas Location: Vang Vieng, Laos
Lotus Hope & Beauty Center by Lotus World	Lotus Hope & Beauty Center supports children and youth in Cambodia from poor families towards independence through beauty care training for youth and living assistance, and connecting them to donors and volunteers from one of the well-known beauty salons in Korea, Lee Chul Hair Ker Ker. Location: Siem Reap, Cambodia
Friends 'n' Stuff by Friends-International	Established by Friends-International as a program to support home-based production and handicraft manufacturing among low-income Cambodian families with children, Friends 'n' Stuff runs retail outlets where local producers can sell their goods, and assists low-income families with training, production, and sales of hand-made products. Location: Phnom Penh, Cambodia
Sapa O'Chau	Sapa O'Chau is a travel agency that helps to improve quality of life for ethnic minority families in the Sapa region. STP support helps with running the travel agency, a café, and the Sapa O'Chau Training Center. Location: Sapa, Vietnam
HoshiZora Tour & Travel by HoshiZora Foundation	The HoshiZora Foundation aspires to educate and improve the living conditions of children in poor neighborhoods through its social enterprise travel agency as well as scholarships and financial assistance. Location: Yogyakarta, Indonesia.
Oasis of Life Center by On Eagle's Wings Development Foundation	The Oasis of Life Center strives to create jobs and improve the living conditions for local farmers through assistance with production and sales of goat milk. Location: Quezon City, the Philippines
Timorgator Cookie by Global Civic Sharing	Global Civic Sharing encourages local communities to set up neighborhood enterprises to bake and sell cookies, and provides nutrition education and meals for 1,000 children living in poverty. Location: Lautem District, East Timor
Wakami by Grupo Saqil	Wakami provides jobs, through hand-made accessories, for over 500 mothers living at isolated locations. It seeks to develop communities with diverse projects and holistic methods. With STP, Wakami supports the manufacture and sale of fashion accessories by improving the channels of supply and distribution and developing a certification procedure for such products. Location: seven regions in Guatemala
Hand Made Café by Eldany Charitable Foundation	The Eldany Charitable Foundation supports over 6,000 people with disabilities through occupational training. At the Café, it sells organic food and provides art classes for all, while providing on-the-job training for youth with disabilities. Location: Almaty, Kazakhstan
Spouts of Water	This venture provides ceramic water purification filters for two dozen schools, allowing over 10,000 local children and teens to study in a more sanitary environment without the worry of waterborne diseases. The program also enhances access to clean drinking water through sales of purification filters, with a variety of affordable payment methods offered to the local population. Location: Katale, Uganda

Global Social Enterprise Accelerating Project

Instead of short-lived relief projects in developing countries, WT planned and engaged in the Global Social Enterprises Accelerating Project with KOICA (Korean International Cooperation Agency), which caters to the local aspects of social enterprises abroad aiming at creating enduring self-reliance and helping local residents change their own lives. Selected six enterprises in four countries (Cambodia, Vietnam, Indonesia and Nepal) receive support for employment, vocational training, and startups. Local economies are vitalized through job creation and the granting of business opportunities to local residents.

International Exchange Activities

WT hosted the Social Enterprise World Forum (SEWF) for the first time in Asia in 2014, and participated in the 2015 SEWF held in Milan, Italy as part of the organizing committee. We presented achievements and shared our experience with hosting the previous Forum, and further developed our network with social enterprises overseas.

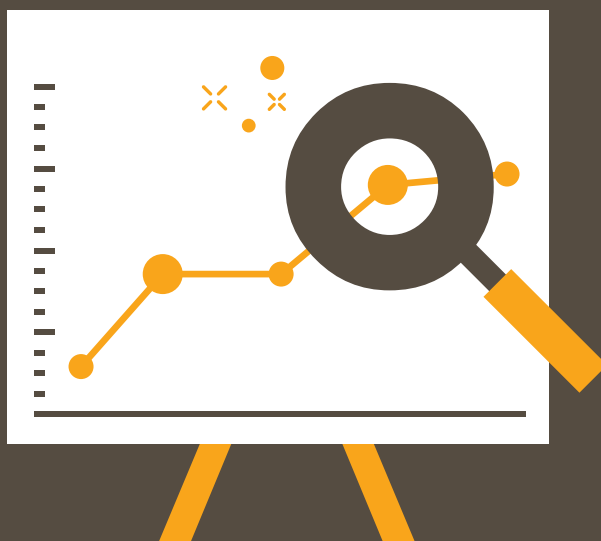
In November, the Taiwan Union of Credit Cooperatives visited WT. WT introduced the current status of its social enterprises supports and sought ways for collaboration with the visiting group.



Policy Research

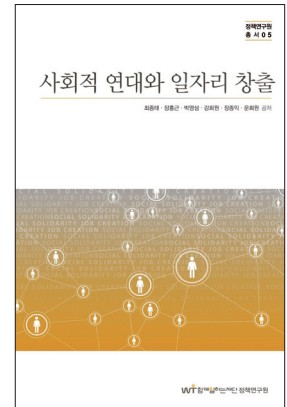
Since 2006, WT has been building forums for diverse research and sharing its research investigations, publishing professional literature, and hosting debates on employment and changes to the social economy environment through an attached institute of policy research.

WT strives to recommend practical policy measures towards job creation and vitalization of the social economy, as well as practical grounds for WT business policies.



○ Research Support Project

In 2015, WT supported research focusing on social solidarity and job creation, titled 'The History of the Social Economy in Korea'. Through this research, WT called upon diverse strata of society to cooperate and unite to resolve issues related to unemployment and suggested direction that Korea's social economy can take to contribute to resolving social issues.



○ Policy Debate Forum

In 2015, a forum commemorating Cooperatives Week in Korea was co-organized by cooperative associations and intermediaries to suggest policies and system amendments to develop cooperatives and contribute to social discourse.



Foundation History

Here is a glance back at the history of the Work Together Foundation, which, since its inception in 1998, has tackled unemployment with innovative vision and hope.

1998

- 06 'the National Movement Committee to Overcome Unemployment' (NMCOU) established (co-chaired by the late Kang Won-Yong, the late Kim Su-Hwan, and Song Wol-Joo).

2003

- 06 NMCOU re-launched as the Work Together Foundation, a public-interest corporation.
- 09 Programs launched to support social enterprises and employment.
- 10 Youth Employment Fair organized (with the Ministry of Labor, MBC, and Hankyoreh).

2004

- 03 Year-round campaign launched: "Beautiful Donations for a Working-Together Society" (KTV).
- 04 Kyobo Dasomi Nursing Volunteers Project launched. Fun Culture School launched.
- 05 Creating Jobs Movement Headquarters launched (as a federation of 32 NGOs).
- 12 Donations drive launched: 'We Recommend Hope for Overcoming Unemployment', (MBC)

2005

- 01 Free proposal program launched (supporting 16 organizations). Nongovernmental Social Security Net for the Unemployed launched (with 26 organizations).
- 08 Elderly Traditional Culture Curators Program launched (Samsung).

2006

- 02 Happy Lunch Sharing Project launched (SK)
- 03 Free at-Home Nursing Assistance Project launched (POSCO)
- 04 Hope Service, a networking center for young people, launched.
- 05 Founding issue published of 'Society for Working Together', a quarterly.
- 09 Policy Research Institute opened.
- 12 Social Entrepreneurs Academy opened (SK).

2007

- 04 Child Instructor Support Center Project launched (on contract with Ministry of Health, consortium with 4 organizations).
- 05 Employment-friendly Community Building Network Project launched. Local Development Safe Program launched.
- 06 Development of local social enterprise hubs commenced.
- 09 Received 'Social Innovation Award' at Peter Drucker Innovation Awards.

- 11 Overseas training of selected social entrepreneurs and Open Social Enterprise Forum begun (SK).

2008

- 01 Social Enterprises of the Year 2007 (Ministry of Labor, Kyobo Life, Samsung, SKT and Hyundai Motor Company)
- 06 Work Together, a project for supporting young social entrepreneurs (G Market).
- 08 Contracted by the Ministry of Labor to run the Social Entrepreneurs Academy.
- 09 Name changed to the 'Work Together Foundation'.
- 10 1st ASES (Asian Social Entrepreneurs Summit) Won the Prime Minister's Award for Support for Social Enterprises

2009

- 01 Project on fostering social enterprises catering to cultural heritage launched (Cultural Heritage Administration).
- 03 Project on fostering social enterprises involved in new and renewable energy launched (Hi-One Resort). MOU signed with Kyungwon University on opening a Department of Social Enterprise. Annual feature series on social enterprises run in The KyungHyang Daily. Designated as a social enterprise support organization (Ministry of Labor).
- 04 SBS Hope TV Fundraising Campaign launched.
- 06 Fundraising Campaign for social enterprises launched (Asia Economy Daily).
- 07 Project of developing accounting experts for Social Enterprises-in-the-Making launched (Shinhan Bank) Support for Ethical Consumption through Social Enterprises launched (G Market) Began linking social enterprises to companies for facilities and equipment (Export-Import Bank of Korea). Bridge, an association of volunteer translators, launched.
- 09 Project for Supporting Social Enterprises-in-the-Making launched (BAT Korea).
- 11 National Contest of Social Venture Ideas organized. Donations MOU signed with Mania Giving Circle.
- 12 Social Venture Incubating Center founded (Life Insurance Social Contribution Committee and Kyobo Life). Project for Supporting Social Enterprises-in-the-Making launched (KEPCO-KPS).

2010

- 01 Youth Dream Field with KB launched (KB Kookmin Bank).
- 02 New Product and Package Design Development (G Market).
- 03 Emergency Loans for Management Stability of Social Enterprises begun (Bank of Korea).
- 07 LH Project for Fostering Local Social Enterprises launched (LH).
- 09 LH Project for Study Rooms in Public Rental Housing Projects launched (LH)
- 11 2nd ASES(Asian Social Entrepreneurs Summit) 2010 organized.

- 12 Social Enterprise Distribution Support Project launched (Hyundai Home Shopping).
Good Consumers 365 begins publication, advertising products and services from social enterprises (Ministry of Labor).

2011

- 04 Project for Supporting Social Enterprises-in-the-Making for Environmental Sustainability launched (LG Electronics, LG Electronics Union).
University Student Financial Aid Project launched (G Market).
Hope Book Cafe launched (Park Hyun-ju Foundation from Mirae Asset).
- 05 Smile Together Partnership launched.
- 06 Young Social Entrepreneur Fostering Project launched (KSEPA).
Social Venture Incubating Center opened at Yangcheon.
- 09 Talk show organized, with Anti-Poverty Help Together Network from Japan.
- 10 Soongsil University Entrepreneurism Academy 2011 opened.
- 11 4th World Social Enterprise School launched (SK).
- 12 "NGO Participation Award" at the 1st SBS Hope-Sharing Awards won.
Eco Center Project launched (Korea Midland Power)
'Starry Solutions' Incubating Project for fostering social enterprises specializing in culture and the arts, launched (Korea Arts and Culture Education Service).

2012

- 03 Eco-friendly Social Enterprise Support Project launched (Hanwha).
Work Together Foundation named as a contractor for projects fostering social entrepreneurship (KSEPA).
Work Together Foundation named a General Regional Support Agency for 2012
- 05 WT Named an Executive Organization for Light A Lamp
[Please Take Care of My Work] published.
- 06 KAIST Business School opened (Hanwha).
Geumcheon-gu Social Economy Ecosystem Fostering Project launched (Geumcheon-gu District Office).
Seodaemun-gu District Social Economy Support Center opened (Seodaemun-gu District Office).
- 07 SELF Asia with ASES 2012 organized (KSEPA and North Jeolla Province)
- 10 Agreement with KEPCO for projects supporting social enterprises (KEPCO).
General Medical Checkup Support for Social Enterprises launched (Samsung Medical Center at Gangbuk).
- 11 Agreement with Hyosung to support young social entrepreneurs (Hanwha).
- 12 Joined the Korea NGO Council for Overseas Development Cooperation (KCO).

2013

- 01 Agreement with Yuhan-Kimberly to raise funds for the Senior Fund and projects supporting social enterprises and small businesses.
- 02 'Further Together,' a conference on fostering ecosystems for social enterprises, organized with Hanwha.
- 05 Eco-friendly Social Enterprise Support Project launched (Hanwha).
Global Drive Project inauguration ceremony held.

- SE Seeds of Hope Project launched (Export-Import Bank of Korea).
- 06 Project for Finding New Models for Cooperatives launched (KEPCO).
- 07 Agreement with Ministry of Education for Light A Lamp.
KEPCO Cafe Hope Project launched (KEPCO).
Hanwha Beans & Berries converted into a social enterprise (Hanwha B&B).
- 09 Agreement with Korea Housing Finance Corporation towards stabilizing employment through the Support Project for Vulnerable Group Care (Korea Housing Finance Corporation).
- 11 Seoul Small Traditional Market Vendors Cooperative Project launched.
- 12 Upcycling Social Business Support Project launched (Hyosung).

2014

- 04 Hope Seed 2014 Pro Bono Volunteer Team (5th) inauguration ceremony held (Export-Import Bank of Korea).
- 05 Project Fund Delivery Ceremony for Stabilization of Employment for Vulnerable Groups in Care Service Section launched (Korea Housing Corporation).
- 06 Korea-Japan Youth NEET Comparison Forum hosted
Announcement of vision for Support Projects for Hanwha Eco-friendly Social Enterprise launched
- 08 WT Electronic Library opened.
'KAIST Social Entrepreneur Management Expert Program' Completion Ceremony held.
- 10 2014 Social Enterprise World Forum was held in Korea
- 12 Mania Giving Circle Farewell Party & Hanging Loose Outside Party launched.

2015

- 03 Global Social Enterprises Accelerating Project launched (KOICA).
- 05 'Innovative & Growing Social Venture Acceleration Project' launched (Export-Import Bank of Korea).
- 07 2015 Forum commemorating Cooperatives Week in Korea held (Co-organized).
'Social Economy Academy for the Disabled' launched.
- 08 Agreement with Hyosung for 2015 Go-With Multicultural Social Business Support Project.
- 09 Workshop for Support Organizations of 'Light A Lamp' launched.
Support Campaign for Independence of Unwed Mothers launched (Consortium).
Results report session for Business Vitalization Project for Small Enterprises launched (Yuhan-Kimberly).
- 11 Presentation session for the 'Items for Seniors Discovery Team Project' to identify the needs of seniors and new employment models launched (Yuhan-Kimberly).
Inauguration ceremony for the Solidarity Benevolent Fund of Social Enterprises (Export-Import Bank of Korea, Korea Central Council of Social Enterprise).
- 12 Yangcheon-gu District Small Manufacturers Cooperation Support Project launched (Korea Airports Corporation, Yangcheon-gu Office).
Korean Version of 'Unemployed Society - The Future of Youth Unable to Find Work' Published.

WT Organization

WT consists of a board of directors, a steering committee, a policy research institute, and a secretariat. All members of WT strive to ensure transparency and fairness in all their management activities.



WT Board of Directors

Chairperson

SONG Wol-Joo Chairman of Good Hands / Former Director of General Affairs, Jogye Order of Korean Buddhism

Executive Director

LEE Sae-Joong Chairman of Korea Green Foundation / Former Director of the Community Chest of Korea

Auditors

OH Young Certified Public Accountant
President of Yeil Accounting Corporation

CHOI Jae-Hwang Certified labor consultant,
CEO of Future Society Labor Consulting

Directors

KIM Young-Vae Vice-chairman of the Korea Employers Federation
KIM Jung-Sook President of the International Council of Women
PARK In-Gu Vice-president of Dongwon Corporation
President of the Korea Food Industry Association

BAHK Jae-Wan Chairman of the Hansun Foundation
Former Minister of Employment & Labor

LEE Woo-Hee Vice-president of S-Tec System
JUNG Young-Mo President of the Hankyoreh
JIN Dong-Soo Advisor for Kim & Chang law office
CHOI Jong-Tae Professor Emeritus of the Business School at Seoul National University,
Former Chairman of the Economic & Social Development Commission of Korea

Steering Committee

President

LEE Sae-Joong Executive Director of the Work Together Foundation

Members

KANG Hee-Won Professor of Law, College of Law at Kyunghee University

RYU Ki-Jung Director of the Korea Employers Federation
MIN Young-Seo Executive Representative of Spark
OH Hye-Ran Executive Director of the Asia Women Bridge DorunDorun

LEE Jung-Sik Managing Director of the Federation of Korea Trade Unions

CHOI Jong-Tae Professor Emeritus of the Business School at Seoul National University,
Former Chairman of the Economic & Social Development Commission of Korea

HWANG Phil-Kyu Former Managing Director of the National Council of Christian Churches in Korea

PARK Ji-Young Secretary-General of the Work Together Foundation

Finance Management Committee

President

LYU Yeong-Jae Head of the Research & Policy Department at the Korea Sustainability Investing Forum,
CEO of Sustinvest Corporation

MUN Seong-Hun Former Vice-president of Tempis Asset Management Corporation

YUN Cheon-Seok Executive Director of the Business Management Department at Chunjae Education Corporation

PARK Ji-Young Secretary-General of the Work Together Foundation

Editing Committee

President

LEE Sae-Joong Executive Director of the Work Together Foundation
BANG Dae-Wook Chairman of Daum Foundation
LEE Hyun-Sook Vice-chief of Section Seoul Department, the Hankyoreh
PARK Ji-Young Secretary-General of the Work Together Foundation

Policy Research Institute

President

CHOI Jong-Tae Professor Emeritus of the Business School at Seoul National University,
Former Chairman of the Economic & Social Development Commission of Korea

Senior Researchers

LEE Sae-Joong Executive Director of the Work Together Foundation

PARK Ji-Young Secretary-General of the Work Together Foundation

JUNG Tae-Gil Head of Audit & Inspection Department of the Work Together Foundation

BYUN Chul-Hwan Head of the Management Planning Department of the Work Together Foundation

Researchers

KANG Hee-Won Professor of Law, College of Law at Kyunghee University

KIL Hyun-Jong Researcher at the Korea Labor Institute
KIM Kang-Sik Professor of Management, Korea Aerospace University
LYU Yeong-Jae CEO of Sustinvest Corporation
PARK Young-Sam Former Member in the Planning Department of the Economic & Social Development Commission

SHIM Sang-Dal Representative of SHC Lab
Senior Researcher at KDI

YANG Yong-Hee Professor of Social Welfare, Hoseo University
LEE Kang-Sung Professor of Management, Sahmyook University
CHANG Jong-Ik Professor, College of Global Cooperation at Hanshin University

JANG Hong-Geun Head of Labor Relations Policy Research Division at the Korea Labor Institute

CHO Young-Bohk Dean of the School of Management, Pusan University
President of RISE (Research Institute for Social Enterprise)



Work Together Foundation Annual Report 2015

Serial Number 9

Date of issue	September 2016
Publisher	Song Hyun-Seob
Published by	The Work Together Foundation 36 WorldCupBuk-ro, 6-gil, Mapo-gu, Seoul (Donggyo-dong 203-4)WT T.02-338-0019 F.02-338-3995
Planned & Edited by	The Management Planning Department, The Work Together Foundation
Designed by	Design Fish (02-3673-2220)

All text and images in this book are copyrighted by the Work Together Foundation.
This material may not be published, broadcast, rewritten, or redistributed without prior consent.

